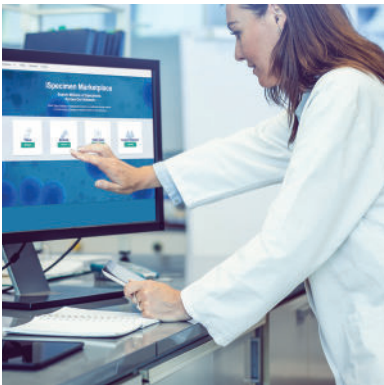


CONTRIBUTE TO BIOMEDICAL DISCOVERY, AS WELL AS TO YOUR BOTTOM LINE.

As aggregators of clinical data, patients, and their specimens, Health Information Exchanges (HIEs) and their members are in a unique position to satisfy medical researchers' need for annotated biospecimens. But reaching the researchers who need samples and compliantly providing them are no easy tasks. The iSpecimen Marketplace solves these challenges by instantly connecting researchers who need specimens with the HIEs and their members who have them—quickly, compliantly, and conveniently.



- **Generate meaningful recurring revenue**
- **Play a meaningful role in advancing research**
- **Extend the value of your HIE and healthcare organization beyond the point of care**

Support research, enhance your revenue

The iSpecimen Marketplace simplifies the process of contributing biospecimens to research while generating additional revenue for HIEs and their members. Leveraging HIE data, our marketplace watches for available specimens and patients who meet researcher study requirements. When matches are found, it directs the participating member to collect, pack, and ship the specimens to the researchers. Research is accelerated, HIE and member sustainability is enhanced, and healthcare improves for all.

Comprehensive solution, free of charge

iSpecimen provides everything needed to match patients and specimens to researchers, free of charge: access to researchers via our online marketplace, a marketing and sales channel, operational support, and compliance support. HIEs simply provide data and healthcare members provide the samples. We do all the work to connect both to a world of researchers.

Simplified and compliant specimen fulfillment

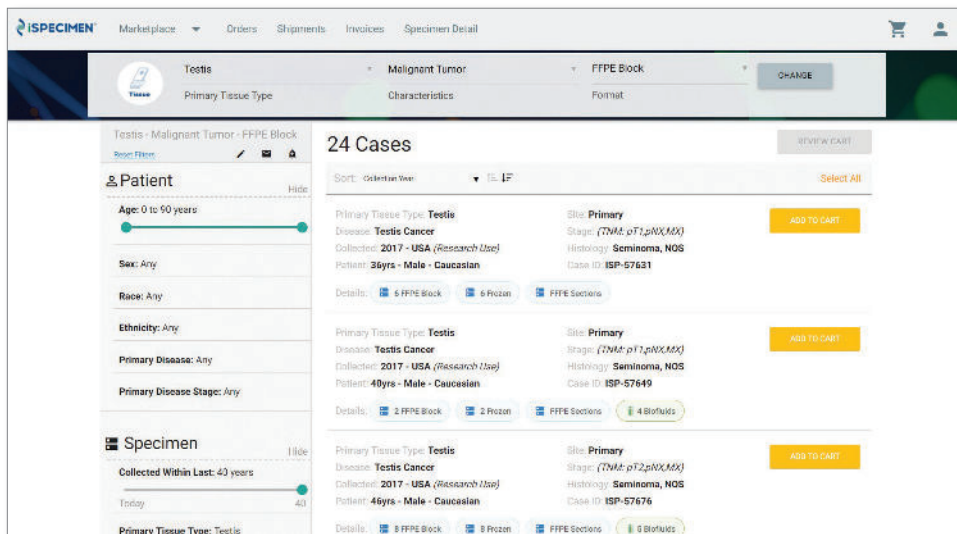
The marketplace handles all contracting, compliance, and order management. Contract once with iSpecimen and gain access to all participating researchers who have studies that match healthcare provider specimen and compliance requirements. When matches are made, our easy-to-use workflow software streamlines the process of collecting and shipping selected specimens. We handle the financial transactions and you receive revenue, while advancing medical research.

81% of patients believe donating human biospecimens is important.¹

Unprecedented technology

At the heart of the iSpecimen Marketplace is a breakthrough technology platform specifically designed to connect researchers to available specimens—anytime, anywhere.

- The platform seamlessly interfaces with existing HIE infrastructure, extracting de-identified data about patients and their specimens available at participating member sites.
- Researchers use this data to find soon-to-be discarded clinical remnants or biorepository samples that match their requirements. The marketplace can also identify patients who may consent to provide new samples for research.
- When matches to research requests are made, the platform alerts HIE member sites to collect, pack, and ship selected specimens directly to researchers or to iSpecimen.



The iSpecimen Marketplace transforms the process of matching available specimens to precise research requirements, while streamlining and simplifying specimen fulfillment workflows.

Join a diverse, global partner network

As an iSpecimen partner, you will join a large and growing network of hospitals, biorepositories, practice groups, commercial laboratories, HIEs, and other healthcare organizations that provide thousands of researchers with access to millions of specimens and patient encounters each year. Sign up today and enjoy the benefits of this global community.

To join the iSpecimen Partner Network or to learn more, visit www.ispecimen.com or contact us at partners@ispecimen.com or 781-301-6700.



SIMPLE

- Easy connection to HIE data sources
- Intuitive specimen and patient search
- Streamlined specimen order and fulfillment workflow
- Single contract providing access to entire network

COMPLIANT

- HIPAA/GDPR
- 45CFR46/CIOMS/TCPS
- IRB/IEC/REB/REC
- Material and Data Use Agreements

SECURE

- Sophisticated de-identification software – PHI stays in HIE data center
- Multiple administrative, physical, and technical safeguards
- Subjected to regular, rigorous privacy and security audits



© 2018 iSpecimen Inc.
450 Bedford Street,
Lexington, MA 02420
781-301-6700
www.ispecimen.com

iSpecimen and the iSpecimen logo are registered trademarks of iSpecimen Inc. All rights reserved.